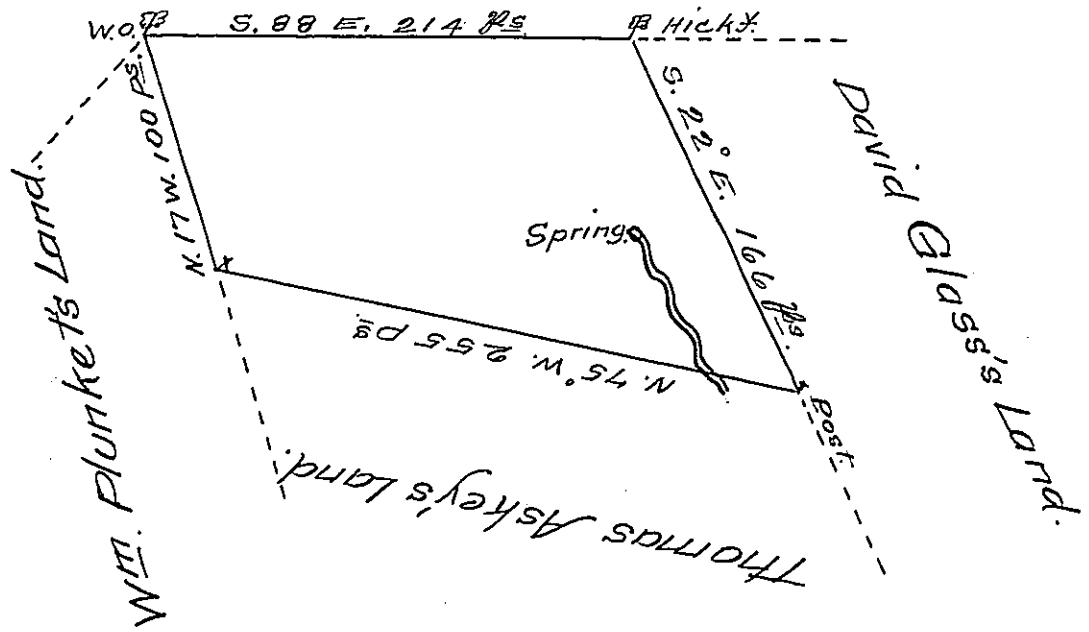


The Widow Beatty's Land.



A Draught of a Tract of Land situate near Rays-  
 town Creek in Bedford Settlement in the County of-  
 Cumberland containing one hundred and fifty nine  
 acres and a half and the usual allowance of six  
 (obliterated) &c. Surveyed the (obl.) day of Jan-  
 uary 17 (obliterated) Snyder (obl.) pursuance of (obl.)  
 Warrant dated the tenth day of July 1765.

Richard Tea

To John Lukens Esq.  
 Survey Genl.

Depty Surveyr

IN TESTIMONY that the above is a copy of the original remaining on file in  
 the Department of Internal Affairs of Pennsylvania, made  
 conformably to an Act of Assembly approved the 16th day of  
 February 1833, I have hereunto set my hand and caused  
 the Seal of said Department to be affixed at Harrisburg,  
 this twenty fifth day of October 1907.

Henry Hoover  
 Secretary of Internal Affairs.